



[www.hagel.net](http://www.hagel.net)



(866) 248-7755 ext.305

# Session #1

## Getting the Most Out of Your Sage ABRA System



Sage Abra Users Conference





[www.hagel.net](http://www.hagel.net)



(866) 248-7755 ext.305

# Introductions

- Terri Gresham, Regional Sales Manager, Northern California and Southwest United States



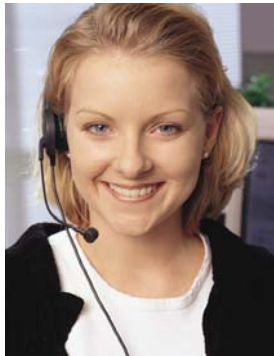
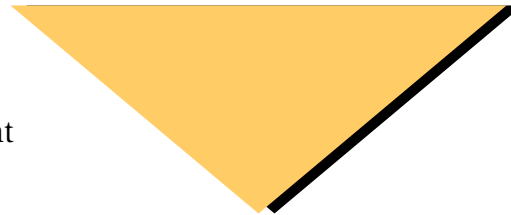
Sage Abra Users Conference





# Abra Workforce Connections

*Connects the workforce with automated online HR, payroll and recruiting workflows*



## Employees

- Benefits enrollment
- Life events
- Time off requests
- Tax withholding
- Payroll information
- Training
- Company information
- Internal job postings

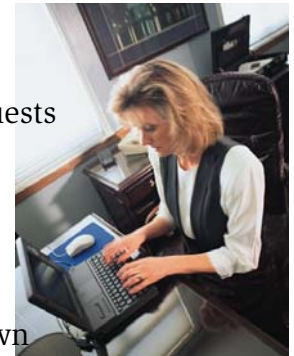
## Administrators

- HR
- Benefits
- Payroll
- Recruiting



## Managers

- Employee profiles
- Approve time off requests
- View performance reviews
- Post employee notes
- Notifications
- Organization drill-down
- Events
- Manage job requisitions
- Schedule interviews



Sage Abra Users Conference



[www.hagel.net](http://www.hagel.net)



(866) 248-7755 ext.305

# ABRA Employee Self Service

- Reduce time spent by HR and Payroll departments processing routine employee information and requests, fielding questions, etc.
  - Put all direct deposit payroll information online
  - Improve employee communications and raise the level of service to employees



Sage Abra Users Conference





[www.hagel.net](http://www.hagel.net)



(866) 248-7755 ext.305

# What's New? Information Sharing!

- ESS now shares dynamic data with your managers:
  - Contact
  - Communicate
  - Connect



Sage Abra Users Conference



# Manager's Salary Budgeting Model

Microsoft Excel - Sample Salary Budget Model.xls

File Edit View Insert Format Tools Data Window Help

Type a question for help

Arial 10 B I U

B7 Manager, Finance

	A	B	C	D	E	F	G	H	I	J	K	L	M	N	O	P		
1									<b>Planning Information</b>									
2									Do Not enter information in shaded calculated cells									
3	<b>Employee Name</b>	<b>Current Title</b>	<b>Last Rating</b>	<b>Grade</b>	<b>Current MidPoint</b>	<b>Current Salary</b>	<b>Current Bonus</b>		<b>Compa-Ratio</b>	<b>Quartile</b>	<b>New Rating</b>	<b>Standard Incr %</b>	<b>Override Incr %</b>	<b>Salary</b>	<b>Bonus</b>	<b>Annual Pay w/ Fringe</b>		
4	Baker, Robert Q	V.P. Sales	4	EW21	\$ 200,240	\$206,780.00	25%	1.03	3	3	3.00%			\$212,983.40	\$ 53,245.85	\$314,150.52		
5	Chin, Nora C	V.P. Operations	3	EW21	\$ 200,240	\$195,670.00	25%	0.98	2	4	3.60%	3.80%		\$203,105.46	\$ 50,776.37	\$274,192.38		
6	Johnson, Mary Sue	Manager, Human Resources	4	EW19	\$ 160,200	\$153,000.00	15%	0.96	2	4	3.60%			\$158,508.00	\$ 23,776.20	\$182,284.20		
7	Willits, Joleen P	Manager, Finance	3	EW19	\$ 160,200	\$152,546.97	15%	0.95	2	3	3.40%			\$157,733.57	\$ 23,660.04	\$181,393.61		
8																		
9																		
10																		
11																		
12																		
13																		
14																		
15																		
16																		
17																		
18																		
19																		
20																		
21																\$952,020.71		

Budget Merit Rates Assumptions

Ready NUM

Live data for just this manager

Sage Abra Users Conference



[www.hagel.net](http://www.hagel.net)



(866) 248-7755 ext.305

# ABRA Benefits Enrollment

- Creates a paperless on-line enrollment center for annual open enrollment, life event changes and new hires
  - Reduces time spent on benefit administration
  - Reduces time and cost of the open enrollment process
  - Increases information accuracy



Sage Abra Users Conference



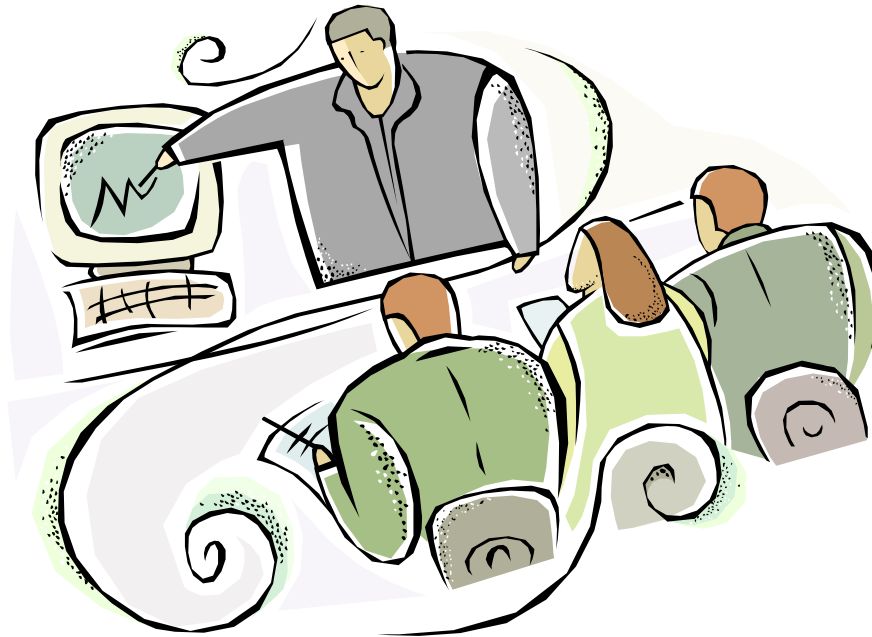


[www.hagel.net](http://www.hagel.net)



(866) 248-7755 ext.305

# Let's Take A Look



Sage Abra Users Conference





[www.hagel.net](http://www.hagel.net)



(866) 248-7755 ext.305

# Sage ABRA Alerts

- Easily create automated Alerts from your ABRA database
  - Automatic emails that inform managers...
  - ...Remind employees
  - ...Create greater efficiency!



Sage Abra Users Conference



[www.hagel.net](http://www.hagel.net)



(866) 248-7755 ext.305

# Sage Abra Benefits Messenger Highlights

- Automates communication of employee benefits enrollment data with insurance and benefit carriers:
  - Extracts the benefit enrollment data from the Abra HR database
  - Transforms (reformats) the data to the exact format required by each carrier
  - Transmits the data electronically (Internet) to each benefit carrier per the schedule determined by that carrier



Sage Abra Users Conference



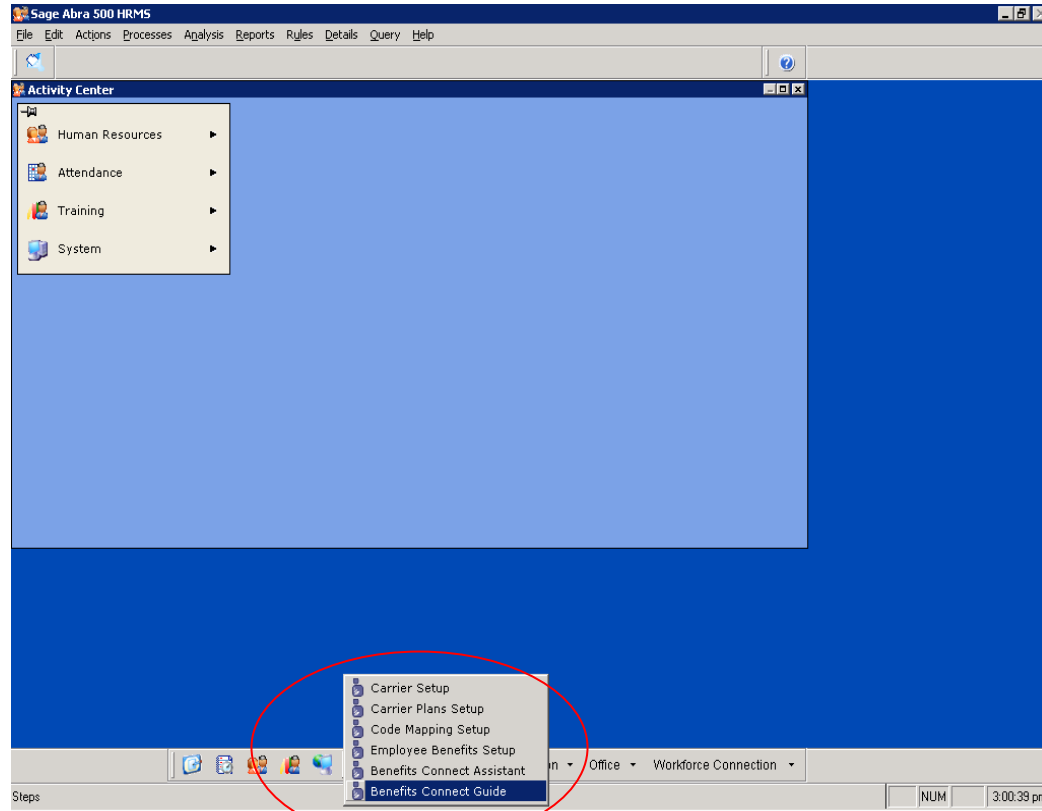


[www.hagel.net](http://www.hagel.net)



(866) 248-7755 ext.305

# Abra Benefits Messenger Overview



Sage Abra Users Conference





[www.hagel.net](http://www.hagel.net)



(866) 248-7755 ext.305

# Abra OrgPlus v8.0.1

- Quickly create organizational charts with photos, logos and titles.



Sage Abra Users Conference





[www.hagel.net](http://www.hagel.net)



(866) 248-7755 ext.305

# Thank you!



Sage Abra Users Conference

